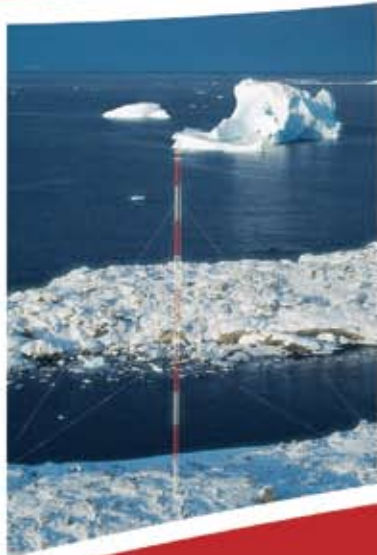


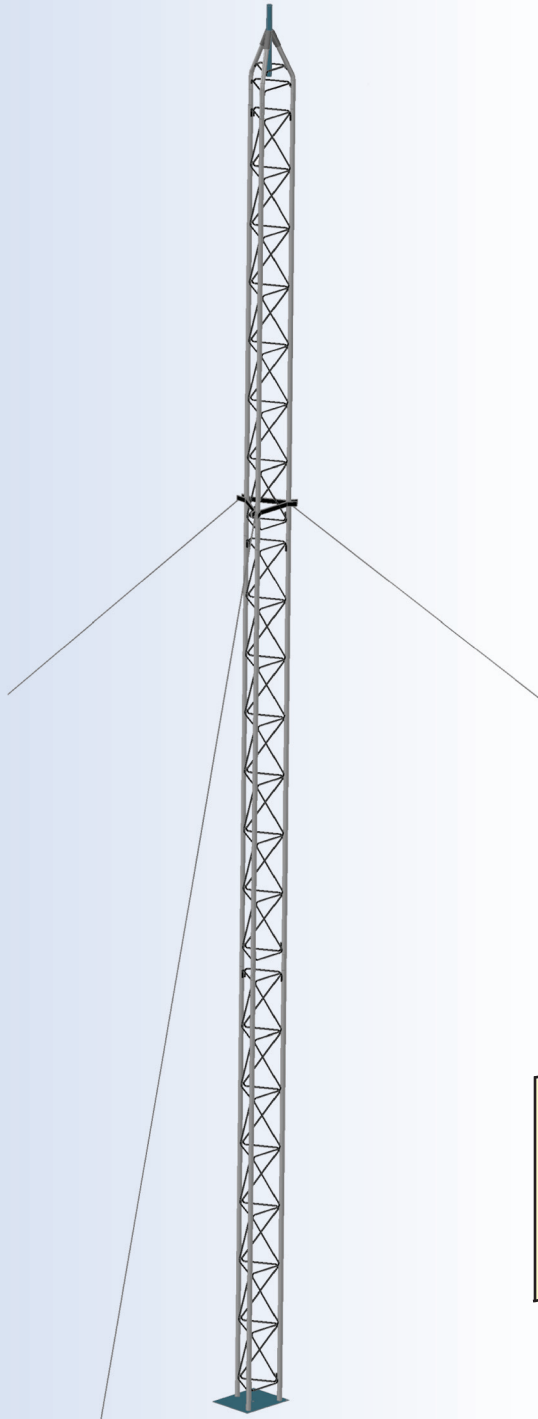
GUYED TOWERS





STANDARD 20G GUYED TOWER

20G



GENERAL USE

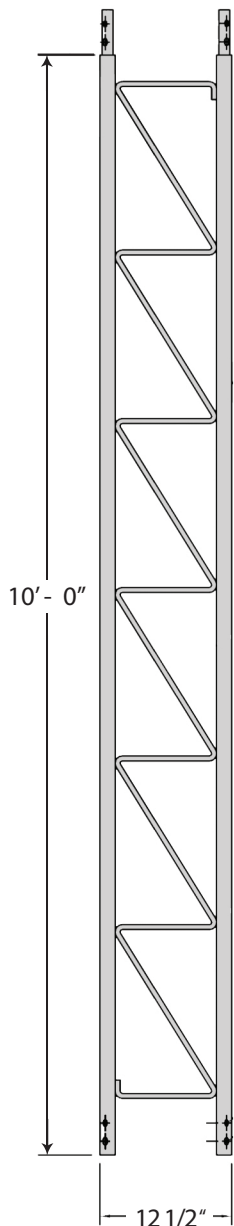
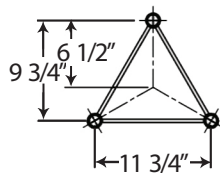
The 20G is an ideal tower for home TV installations. It's designed and engineered for 2 square feet of antenna surface and will handle most home TV installations. Should a larger antenna be used, we recommend the 25G Series.

FEATURES

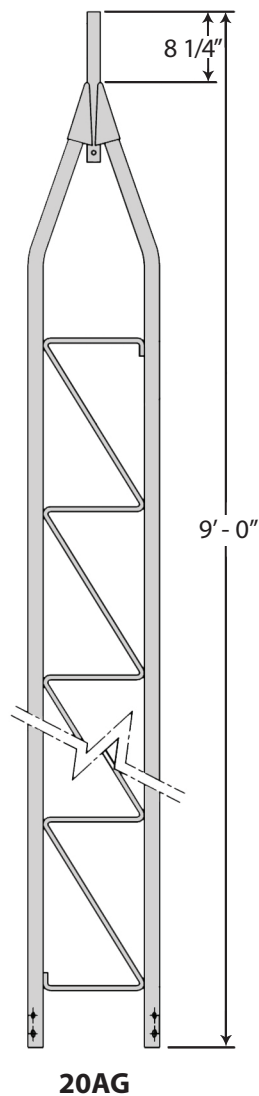
- Completely hot-dip galvanized after fabrication
- Accessories for 20G are the same as the 25G and are completely interchangeable
- Built on 12 1/2" equilateral triangle design
- High strength tubular legs joined by Zig-Zag® cross members
- Each 10' section contains all required nuts and bolts inside one leg

CAUTION: the mixing of so-called interchangeable copies of ROHN towers with ROHN towers is dangerous and voids all engineering or warranty data supplied by ROHN. Materials used by the so-called copies are not the same quality and have not been tested or engineered by ROHN to conform to the same quality standards. Mixing of ROHN items may endanger the lives of your customers and cause serious tower failures and financial misfortune for all concerned.

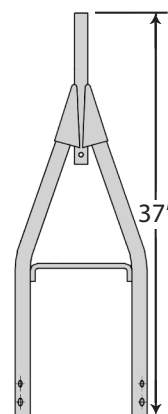
STANDARD 20G GUYED TOWER SECTIONS



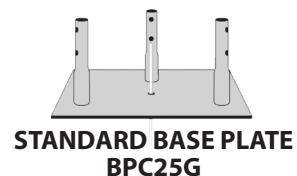
STANDARD SECTION
20G - 10' Section



20AG



20BG



STANDARD BASE PLATE
BPC25G

All mounts and accessories for the 25G
can be used interchangeably with the 20G